



Flight Plan & Site Survey

Created using **RPAS Wilco**[®]

Operation Name:	shuswap aeromodellers shuswap lake field
Pilot Name:	██████████
Pilot Certificate:	██████
Flight Start:	January 23, 2023 10:45 AM
Flight End:	January 23, 2023 12:45 PM
Flight Area (Latitude):	50° 51' 39.30" N (50.861)
Flight Area (Longitude):	119° 22' 47.30" W (-119.38)
Altitude - Radius:	Alt: 700 ft - Rad: 926.0 m (0.5 nm)
Airspace:	UNCONTROLLED
FIR - Contact:	CZVR - 604-586-4500
Weather:	-2.1 Celsius - Snow, Partially cloudy

Please ensure you received all required authorizations prior to flight.

Disclaimer

This Site Survey was created using RPAS Wilco by AIM Robotics. The flight plan contained is intended only for RPAS flights on the date/time and location specified. The user accepts all responsibility for the accuracy and completeness of the information contained.

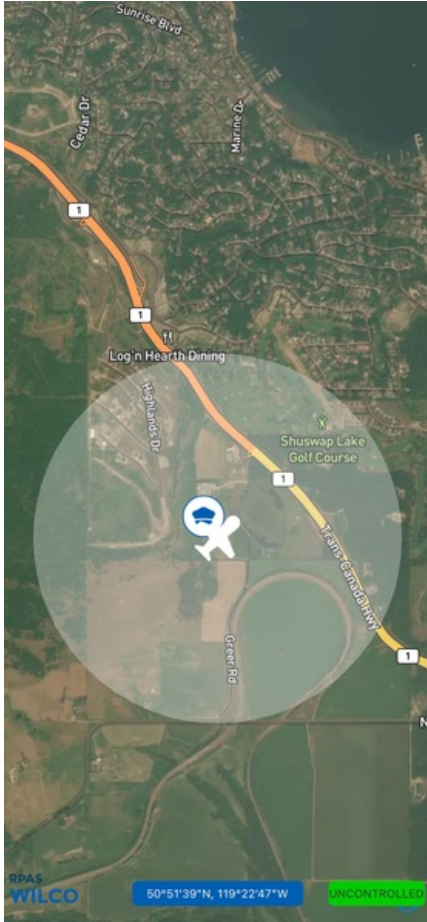
For the complete Terms & Conditions, see

<https://rpswilco.com/#/tnc>



Included

- Site Survey
- Obstacles (if available)
- Nearby Aerodromes
- Canadian Aviation Regulations
- GFA
- Aerodrome Supplements
 - METAR & TAF (if available)
 - NOTAMS
 - CFS

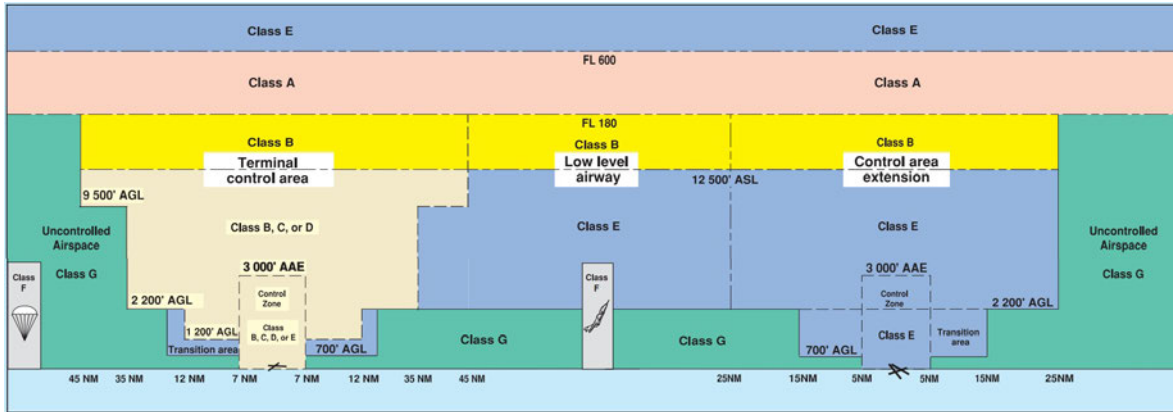
Flight Map



MAP Details

	Latitude	Longitude
 MODEL	50° 51' 39.30" N (50.861)	119° 22' 47.30" W (-119.38)
 Pilot	50° 51' 42.90" N (50.8619)	119° 22' 50.90" W (-119.3808)

Airspace Classification



Overlying Airspaces

Class	Name	Floor	Ceiling
E	Williams Lake, BC CAE	8000MSL	12500MSL
B	Williams Lake, BC CAE	12500MSL	18000MSL
E	T676 Airway MEA: 12800MSL	2200AGL	12800MSL
B	T676 Airway MEA: 12800MSL	12800MSL	18000MSL

Nearest Aerodromes & Distance from Operation

ROSS CREEK (CRC3	AERODROME	Reg)	Lat: 50.966	Long: 119.225	15.947 KM	8.61 NM
SALMON ARM (CZAM	AERODROME	Reg)	Lat: 50.682	Long: 119.229	22.545 KM	12.17 NM
OWLS LANDING (COL4	HELIPORT	Reg)	Lat: 50.811	Long: 118.97	29.309 KM	15.83 NM
SEYMOUR ARM (CSM4	AERODROME	Reg)	Lat: 51.242	Long: 118.949	51.985 KM	28.07 NM

Weather Information for Mission Day

Summary: Partly cloudy throughout the day with snow clearing later.

Condition	Temperature	Feels Like	Precipitation	Visibility	Cloud Coverage	Wind Speed	Humidity
Snow, Partially cloudy	2.1 Celsius	3.7 Celsius	100.0 %	28.0 Km	67.3 %	11.5 kph	85.8 %

BRITISH COLUMBIA

AERODROME/FACILITY DIRECTORY

ROSS CREEK BC

CRC3

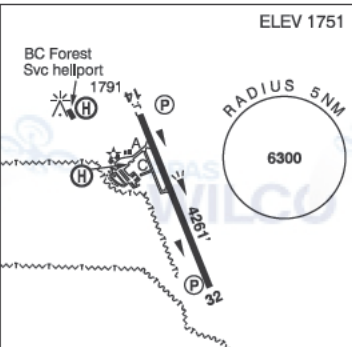
REF	N50 57 57 W119 13 32 2.4E 16°E (2015) UTC-8(7) Elev 1260' A5005	
OPR	Ross Creek Landing Ltd 604-996-2939 Reg PPR	
PF	C-2,5 D-4	
FLT PLN		
FIG	Kamloops 866-WXBRIEF (Toll free within Canada) or 866-541-4101 (Toll free within Canada & USA)	
SERVICES		
S	4,5	
RWY DATA	Rwy 16(164°)/34(344°) 2312x70 GRVL/GRASS Rwy 34 up 1.73%	
RCR	Opr No win maint	
COMM		
ATF	tfc 123.2 5NM 3000 ASL	
CAUTION	Hills N of A/D. Trees to 40' S of Thld 34. Trees to 50' W of rwy. Ditches on either side of rwy. Wildlife on rwy.	

BRITISH COLUMBIA

AERODROME/FACILITY DIRECTORY

SALMON ARM BC

CZAM


REF	N50 40 57 W119 13 43 2SE 16°E (2013) UTC-8(7) Elev 1751' A5005 LO2 CAP	ELEV 1751
OPR	City of Salmon Arm 250-832-1000 O/T 250-833-2945 Reg Ldg fees may be levied	
PF	A-1,6 C-2,3,4,5	
FLT PLN	FIC Kamloops 866-WXBRIEF (Toll free within Canada) or 866-541-4101 (Toll free within Canada & USA) WX AUTO (see COMM) WxCam	
SERVICES	FUEL 100LL, JA-1, MG-3, SP 250-832-1000 15-02Z (DT 13-04Z) OIL All S 1,2,3,4,5	
RWY DATA	Rwy 14(142°)/32(322°) 4261x75 asphalt Rwy 32 first 1420' down 1.9% RCR Opr Ltd win maint	
LIGHTING	14-AS(TE ME) P1 3.5°, 32-(TE ME) P1 3.5° ARCAL-122.9 type K exc RILS (rwy 14) on high setting only.	
COMM	RCO Pacific rdo 122.375 (FISE) 126.7 (bcst) MF UNICOM ltd hrs O/T tfc 122.9 5NM 4700 ASL (CAR 602.98) AUTO 122.55	
RESTRICTIONS	OPERATING RESTRICTIONS 1. Pursuant to CARS 602.96(3)(D), not certified for ngt ops unless all hazard beacons are oprg.	
PRO	Circuit altitude 3000 ASL. Rgt hand circuits Rwy 32 (CAR 602.96). Night Ops: Follow circuit pro as depicted on VFR terminal ngt circuit pro chart. During parachuting activity over A/D Apr 1-Oct 31, overfly field over Thld 32.	
CAUTION	Only pilots familiar with local terrain should use this A/D dur hrs of darkness. Numerous P-lines in vic of A/D. Hang glider act sfc to 10,000 ASL within 15NM of A/D. Check for NOTAM.	

BRITISH COLUMBIA

AERODROME / FACILITY DIRECTORY

SICAMOUS / OWLS LANDING BC (Heli)

COL4

REF	N50 48 39 W118 58 13 Adj SSE 16°E (2016) UTC-8(7) Elev 1394' A5005	
OPR	Guy Maris 780-920-2191 Fax 780-483-5400 Reg PPR	
PF	C-1,2,3,4,5 D-6	
FLT PLN	FIC Kamloops 866-WXBRIEF (Toll free within Canada) or 866-541-4101 (Toll free within Canada & USA) or 250-376-8392	
HELI DATA	FATO 300' x 90' CONC/ASPH/aggregate TLOF 200' x 90' CONC/ASPH Safety Area 300' x 90' Max heli overall length 50'	
RCR	Opr 16-01Z‡ Mon-Fri. No win maint.	
COMM	ATF tfc 123.2 5NM 4400 ASL	
PRO	Arr/dep curved 276° to 309° fr heli, day use only. All apch and dep over lake.	
CAUTION	Unmarked p-lines and tall trees E of FATO.	

BRITISH COLUMBIA

AERODROME/FACILITY DIRECTORY

SEYMOUR ARM BC

CSM4

REF	N51 14 33 W118 56 59 Adj NW 16°E (2021) UTC-8(7) Elev 1150' A5005
OPR	Seymour Airstrip Ltd. 604-649-3524 Reg
PF	C-1,2,5
FLT PLN FIC	Kamloops 866-WXBRIEF (Toll free within Canada) or 866-541-4101 (Toll free within Canada & USA)
RWY DATA RCR	Rwy 18(177°)/36(357°) 2700x125 GRASS/GRVL Opr 16-01Z† No win maint
PRO	Recommend Arr Rwy 36 / Dep Rwy 18 dur lgt wind due rising terrain to N. Parking avbl W of Thld 18.
CAUTION	Tall trees both sides of rwy. Rwy strip cleared of trees to 140' wide. Rising terrain and trees to N. Bldgs along E edge of rwy.

